



2 CE
HOURS

SEPTEMBER 17
TORONTO, ON

The Home Care Advantage: Setting the Stage for Success

**An Evening Program
with Kerry Lepicek, RDH**



SEPTEMBER 17, 2026 | TORONTO, ON

The Home Care Advantage: Setting the Stage for Success

with Kerry Lepicek, RDH

Are you looking to boost your patients' commitment to home care? Let's explore how we can leverage technology to enrich our discussions and treatment plans. Kerry will present essential home care tools to improve daily routines and treatment outcomes, highlighting the importance of daily biofilm disruption for better oral health. This includes implementing effective tools that can be utilized both in the office and at home. We will evaluate traditional home care solutions and discuss the need for additional strategies through a live demonstration of various interdental and specialty brushes. Kerry will dive into adjunctive treatments, including probiotics and diode lasers, that aid home care practices in preserving balance within this complex ecosystem. Dental teams can coach patients through pre and post-treatment care, using strategies that strengthen engagement and empower patients to play an active role in maintaining health.

LEARNING OBJECTIVES

- Assess the effectiveness of traditional home care tools in patient care routines.
- Analyze interdental brushes, focusing on their sizes and bristle configurations, to determine their suitability for different patient needs.
- Highlight the use of specialty brush designs to address specific anatomical challenges in patients with periodontal disease, implants, bridges, or other restorations.
- Implement communication strategies for pre and post-treatment that promote engagement in home care and enhance patient involvement in oral health maintenance.

WHO SHOULD ATTEND?

Designed for dental hygienists who want to improve patient compliance by strengthening communication strategies that motivate, educate, and empower patients to take ownership of their home care.

Presented by:



2 CE
HOURS

TORONTO (SEPTEMBER 17)

Align Technology
100 Queens Quay E, Suite 1500,
Toronto, ON M5E 1V3

AGENDA

6:30pm-7:00pm

Registration & Light Bites

7:00pm-9:20pm

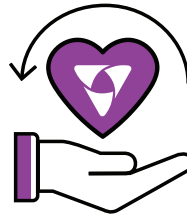
Opening Remarks & Lecture

9:20pm-9:30pm

Closing & Prizes

TUITION

\$69



Giving back, with
a portion of
proceeds donated
to a local charity

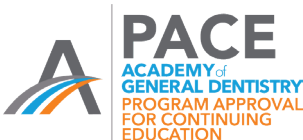


SPACE IS LIMITED, REGISTER TODAY

Scan the QR code, visit www.crd-ce.com,
or call **1-800-265-3444 ext 1**.

Cancellation Fee / Details:

Full refunds will be granted if notification is received 30 days prior to the course. If cancellation occurs less than 30 days prior to the course, no refunds will be granted. If insufficient enrollment necessitates cancellation of a course, all tuition fees will be refunded. Clinical Research Dental is under no obligation to reimburse participants for airline, hotel reservations or any other costs.



Clinical Research Dental
Nationally Approved PACE Program
Provider for FAGD/MAGD credit.
Approval does not imply acceptance by
any regulatory authority or AGD endorsement.
1/1/2023 to 12/31/2026
Provider ID #208086



SEPTEMBER 17, 2026 | TORONTO, ON

The Home Care Advantage: Setting the Stage for Success

with Kerry Lepicek, RDH

ABOUT KERRY LEPICEK, RDH

Kerry Lepicek is an experienced dental hygienist with over 20 years of clinical practice. She works at Clinical Research Dental as a Clinical Specialist in Dental Hygiene and Education and part-time in a general practice. Kerry's expertise includes oral biofilm, halitosis, the oral-systemic connection, and the dental hygiene process of care. She is focused on educating patients and the dental profession on health and wellness. Kerry is involved in various dental organizations, including section editor for Women in Dentistry, on the Research Advisory Committee for the Ontario Dental Hygiene Association, and on the advisory board for AAOSH. She recently received the Distinguished Services Award from Ontario Dental Hygienists Association (ODHA) for outstanding contributions to the dental hygiene profession and the Association. Her practical advice will transform your practice and patients' health.

2 CE HOURS | AGD SUBJECT CODE: 490

Sponsored by:



www.crd-ce.com